

Dialogannahme

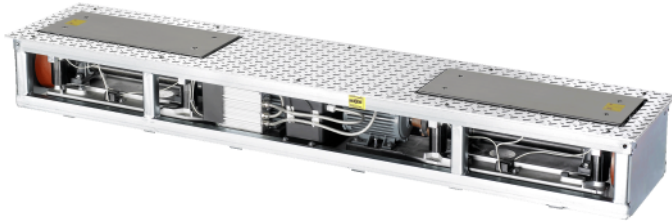
# TEST LANES

Version 2024.05.03 – Prices on request

## Suspension tester SA 640 | 400 V | EUSAMA

*Special accessory for series BD 4xxx brake tester | only to be used for checking the technical condition of suspension elements*

**Article number: 1 691 620 307**



- Under unfavorable conditions, the road surface adhesion of a wheel is governed by the technical condition of the suspension elements (suspension system, wheel bearings, tires and shock absorbers).
- The SA 640 measures the relative road surface adhesion of a wheel on the basis of the internationally recognized EUSAMA principle.
- The results of the full chassis test provide an overall assessment of the road safety of the vehicle.
- Measurement system: Bending bar with strain gauge

### **Scope of delivery:**

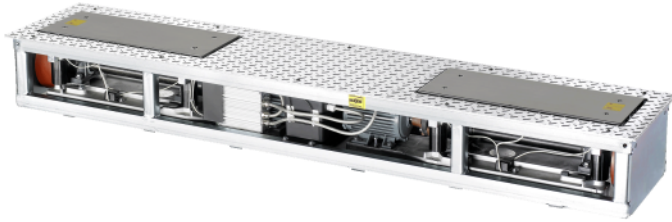
- Suspension tester SA 640
- RR Connecting cable
- RR Set of clamping fixtures and fastening materials



## Suspension tester SA 640 | 230 V | EUSAMA

*Special accessory for series BD 4xxx brake tester | only to be used for checking the technical condition of suspension elements*

**Article number: 1 691 620 311**



- Under unfavorable conditions, the road surface adhesion of a wheel is governed by the technical condition of the suspension elements (suspension system, wheel bearings, tires and shock absorbers).
- The SA 640 measures the relative road surface adhesion of a wheel on the basis of the internationally recognized EUSAMA principle.
- The results of the full chassis test provide an overall assessment of the road safety of the vehicle.
- Measurement system: Bending bar with strain gauge

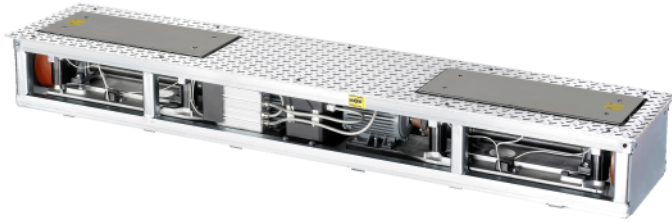
### **Scope of delivery:**

- Suspension tester SA 640
- RR Connecting cable
- RR Set of clamping fixtures and fastening materials

## Suspension tester SN 680 | 400 V | EUSAMA | with noise detection

*Special accessory for series BD 4xxx brake tester | only to be used for checking the technical condition of suspension elements*

**Article number: 1 691 620 309**



- Under unfavorable conditions, the road surface adhesion of a wheel is governed by the technical condition of the suspension elements (suspension system, wheel bearings, tires and shock absorbers).
- The SN 680 measures the relative road surface adhesion of a wheel on the basis of the internationally recognized EUSAMA principle.
- The results of the full chassis test provide an overall assessment of the road safety of the vehicle.
- Measurement system: Bending bar with strain gauge

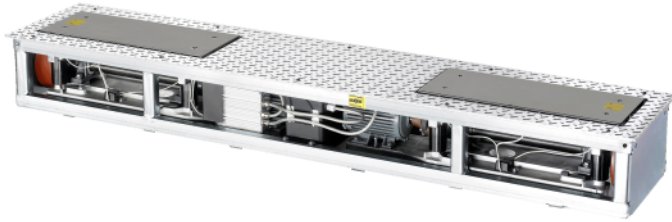
### **Scope of delivery:**

- Suspension tester SN 680
- RR Connecting cable
- RR Set of clamping fixtures and fastening materials

## Suspension tester SN 680 | 230 V | EUSAMA | with noise detection

*Special accessory for series BD 4xxx brake tester | only to be used for checking the technical condition of suspension elements*

**Article number: 1 691 620 308**



- Under unfavorable conditions, the road surface adhesion of a wheel is governed by the technical condition of the suspension elements (suspension system, wheel bearings, tires and shock absorbers).
- The SN 680 measures the relative road surface adhesion of a wheel on the basis of the internationally recognized EUSAMA principle.
- The results of the full chassis test provide an overall assessment of the road safety of the vehicle.
- Measurement system: Bending bar with strain gauge

### **Scope of delivery:**

- Suspension tester SN 680
- RR Connecting cable
- RR Set of clamping fixtures and fastening materials

## Suspension tester SA 650 | Passenger cars | 13t drive-over load | EUSAMA | 400V

*Special accessory for series BD 5xxx and BD 8xxx brake tester | for checking the technical condition of suspension elements on passenger cars in a truck test lane*

**Article number: 1 691 620 501**



### Scope of delivery:

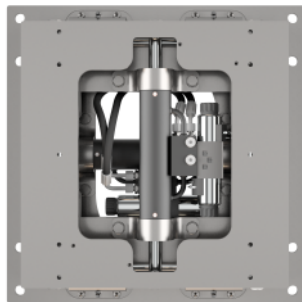
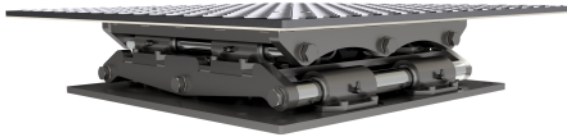
- Suspension tester
- Power supply cable
- Fastening materials

Note: For pit installations, the maximum possible test width is 2400mm.

# Joint Play Detector GST 8600 | Truck | 20t | 400V

Quick detection of defects and wear on wheel bearings, steering parts, suspension, stabilizers, and trailer couplings on trucks with up to 20t axle loads

Article number: 1 691 850 200



## Joint Play Detector Truck 20t - Quick detection of defects and wear on trucks with up to 20t axle load:

- wheel bearings,
- steering parts,
- suspension,
- stabilizers,
- Kingpins and
- trailer couplings

### Advantages:

- Smooth movement due to powerful hydraulic unit with high precision for easy and fast positioning
- Low-noise under-oil hydraulic power unit
- Two digital test plates built into the foundation at ground level
- Galvanized test plates with integrated, digital valve control electronics
- Bearing is provided by extra-robust, hard-chrome plated steel shafts
- Extremely robust and low-maintenance design for long service life
- Test plates can be moved in horizontal, vertical, and transversal directions
- Further operating modes including automatic modes (optionally)
- Wireless radio hand lamp with one-hand operation for movements control
- Wireless radio hand lamp with long-life LEDs and lens for an ideal light beam angle
- Suitable for existing Beissbarth foundation frames (as used for GST-8508)
- Suitable for all popular foundation frames (accessories required)
- Meets the requirements of Directive 2014/45/EU

### Standard swinging movements:

- Longitudinal and transverse, opposite directions

### Optional swinging movements upgrades:

- Longitudinal and transverse, same direction (1691853206)
- Automatic longitudinal and transverse, same and opposite directions (1691853203)
- Automatic circular (1691853204)
- Automatic diagonal (1691853205)
- Single wheel, left / right (1691853208)
- Automatic center (1691853207)
- All movements (1691851204)

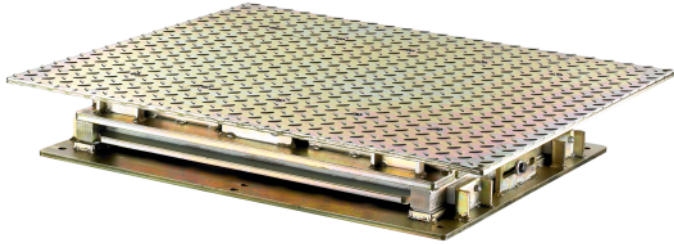
### Scope of delivery:

- 2x test plates
- Hydraulic power unit including wiring
- Electrical control box including wiring
- Wireless hand lamp including charging station and power supply
- Hydraulic hose set

## Joint play detector GST 8508 | 400V

*Quick detection of defects and wear on suspension systems on two-tracks trucks with up to 16t axle load. Stand alone product*

**Article number: 1 691 850 100**

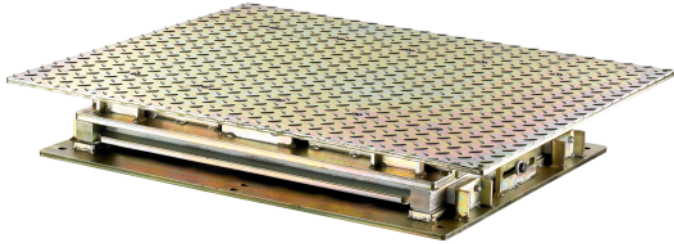




## Joint play detector GST 8508 | 230V

*Quick detection of defects and wear on suspension systems on two-tracks trucks with up to 16t axle load. Stand alone product*

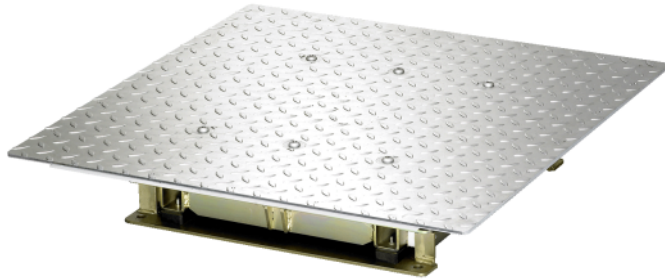
**Article number: 1 691 850 101**



## Joint play detector GST 651 | 400 V

*To detect defects and wear in the suspension systems of double-track vehicles | up to 4 t axle load*

**Article number: 1 691 650 000**



- The geometry of the axle to be tested is displaced by moving the test plates of the GST 6xx. This makes it possible to detect impermissible play at joints and wheel bearings or to localise cracks at stub axles for example.
- The GST 651 is only to be used for the inspection of double-track vehicles with a maximum axle load of 4000 kg.
- Remote control over control lamp with control buttons (Ø 60 mm, length 205 mm, incl. Halogen bulb with reflector, GU5,3 / 38°, 12 V / 20 W)

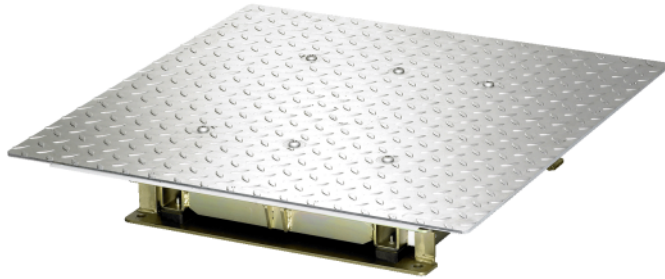
### Scope of delivery:

- Test plates (2x)
- Control module incl. control lamp
- Hydraulic unit
- Hydraulic line fitting set
- Fitting set
- Hydraulic fluid (Type of fluid DIN 51524 VG 22)

## Joint play detector GST 651 | 230 V

*To detect defects and wear in the suspension systems of double-track vehicles | up to 4 t axle load*

**Article number: 1 691 650 001**



- The geometry of the axle to be tested is displaced by moving the test plates of the GST 6xx. This makes it possible to detect impermissible play at joints and wheel bearings or to localise cracks at stub axles for example.
- The GST 651 is only to be used for the inspection of double-track vehicles with a maximum axle load of 4000 kg.
- Remote control over control lamp with control buttons (Ø 60 mm, length 205 mm, incl. Halogen bulb with reflector, GU5,3 / 38°, 12 V / 20 W)

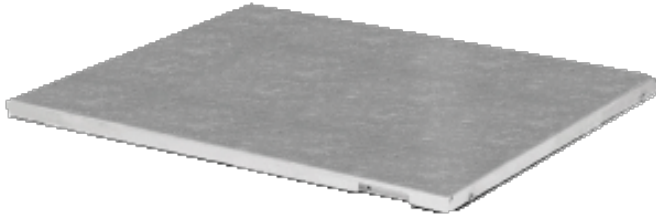
### Scope of delivery:

- Test plates (2x)
- Control module incl. control lamp
- Hydraulic unit
- Hydraulic line fitting set
- Fitting set
- Hydraulic fluid (Type of fluid DIN 51524 VG 22)

## Side Slip Tester MSS 8400

*To quickly measure toe-in or toe-out on two-tracks trucks with maximum test load of 8000kg. Compatible with both old (MB 8xxx) and new (BD 5xxx to BD 8xxx) generation brake tester*

**Article number: 1 691 841 007**



## Suspension Tester

---



### Suspension tester SA 640 | 400 V | EUSAMA

Article number: 1 691 620 307



### Suspension tester SA 640 | 230 V | EUSAMA

Article number: 1 691 620 311



### Suspension tester SN 680 | 400 V | EUSAMA | with noise detection

Article number: 1 691 620 309



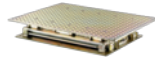
### Suspension tester SN 680 | 230 V | EUSAMA | with noise detection

Article number: 1 691 620 308



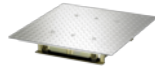
### Suspension tester SA 650 | Passenger cars | 13t drive-over load | EUSAMA | 400V

Article number: 1 691 620 501



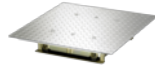
### Joint play detector GST 8508 | 230V

Article number: 1 691 850 101



### Joint play detector GST 651 | 400 V

Article number: 1 691 650 000



### Joint play detector GST 651 | 230 V

Article number: 1 691 650 001

## Side Slip Tester

---



### Side Slip Tester ST 600

Article number: 1 691 631 013



### Side Slip Tester MSS 8400

Article number: 1 691 841 007

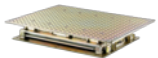
## Play Detector

---



### Joint Play Detector GST 8600 | Truck | 20t | 400V

Article number: 1 691 850 200



### Joint play detector GST 8508 | 400V

Article number: 1 691 850 100



# IMPORTANT NOTES

- Please notice: This list contains spare parts, too.
- Without instruction or assembly.
- Delivery ex works including packaging.

## VERSION 2024.05.03 – PRICES ON REQUEST

- Starting from now all previous lists will lose their validity.
- Please read our general terms and conditions in the latest version before ordering; to be found under [www.beissbarth.com](http://www.beissbarth.com).

**Order number** 1 693 602 008 **Print norm** BB XXX / XX.XX.2020 DE · Subject to technical and program changes, errors excepted.

### Beissbarth Automotive Testing Solutions GmbH

Hanauer Straße 101  
80993 Munich, Germany  
[sales@beissbarth.com](mailto:sales@beissbarth.com)  
[www.beissbarth.com](http://www.beissbarth.com)

Telefon: +49-(0)89-14901-0  
Telefax: +49-(0)89-14901-246

